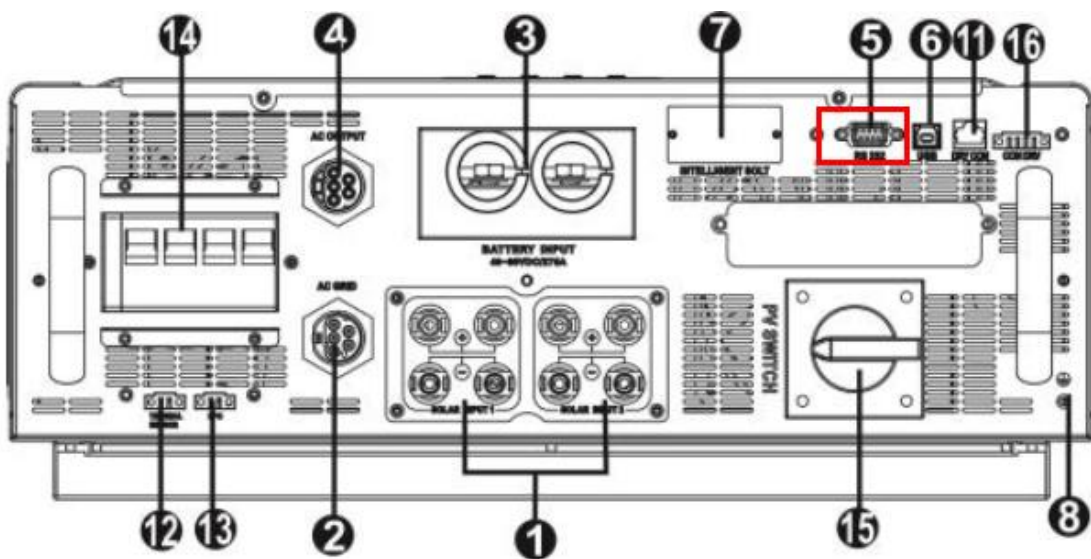


Infini-Solar 10KW upgraded Firmware SOP

1. Make sure all of software which can occupy the resource of com port is closed, such as SolarPower.
2. Startup Infini-Solar 10KW and use RS232 cable connect between PC and the com port of Infini-Solar 10KW which show as below.

At this step, LCD should be light.

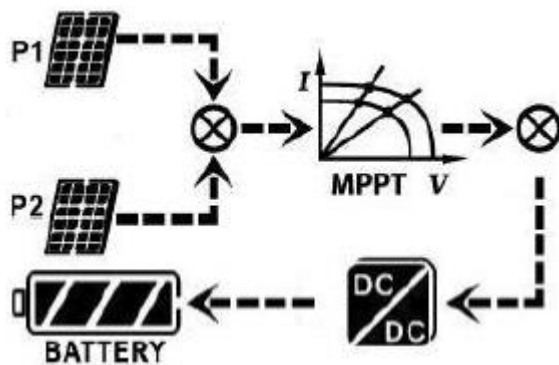
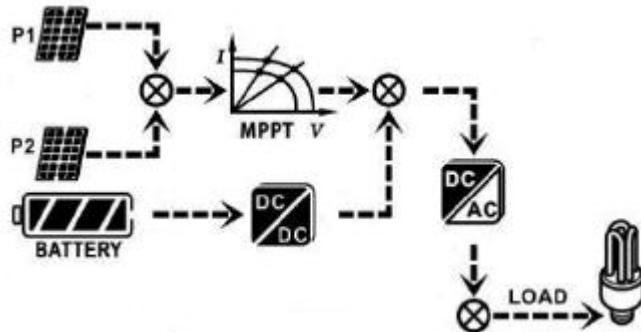


3. Please only connect AC GRID to inverter, make sure LCD is on after you turn on AC GRID switch. If utility icon is flashing, please exchange L2 and L3 input and check it again. If fine, please press “Enter” button for 1 sec at least to make it work in bypass mode as below.



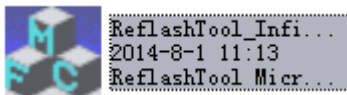
If you don't have AC GRID, please connect PV and battery, both of them are necessary. Please press “Enter” button for 1 sec at least to make it

work in battery mode. If the battery voltage cannot satisfy working in battery mode, please check it work in PV charge battery mode as below.

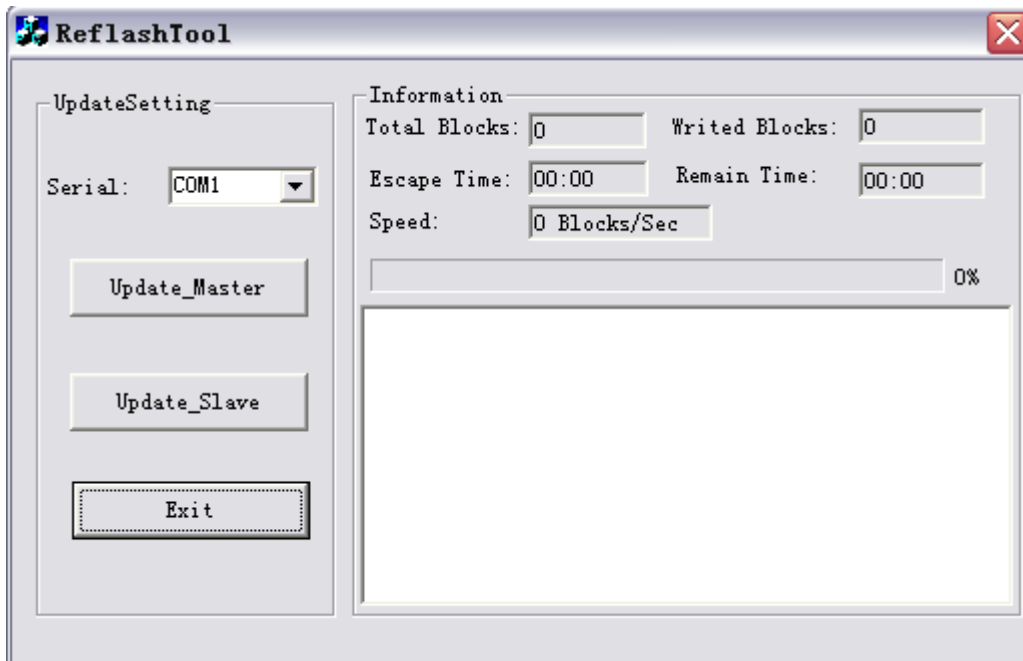


4. Decompress the package of upgraded tool and startup

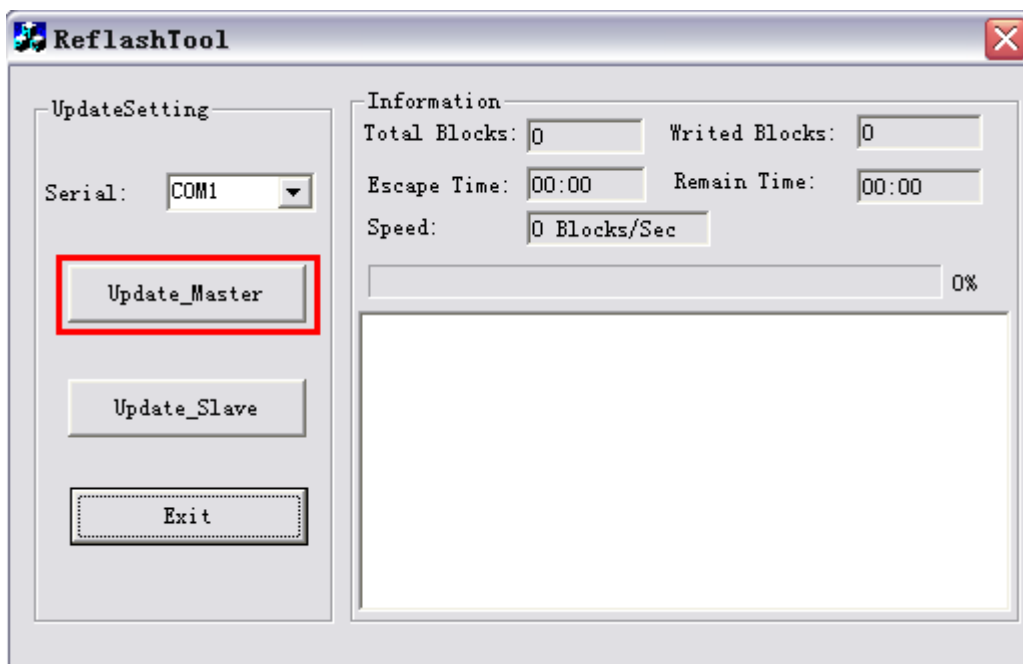
“ReflashTool_Infini10KW.exe”.

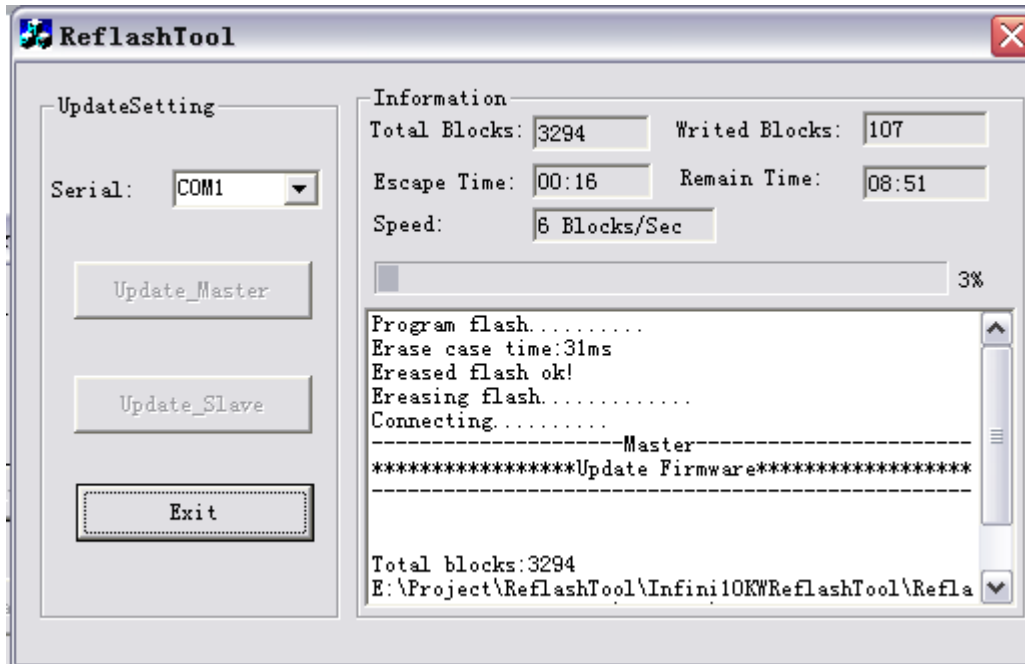
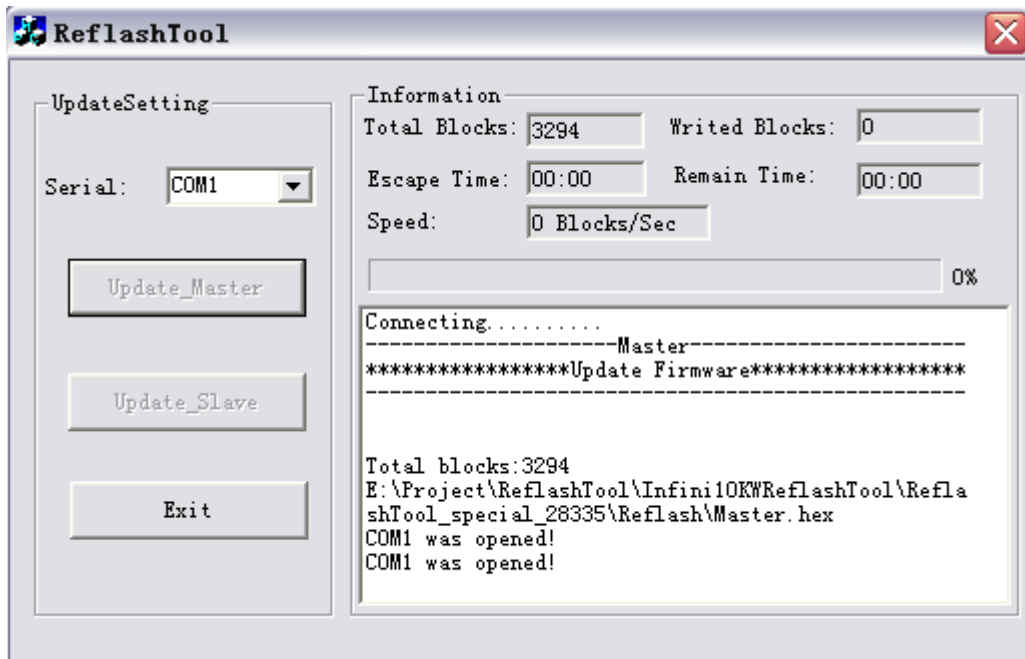


5. The system will show a dialog as below.

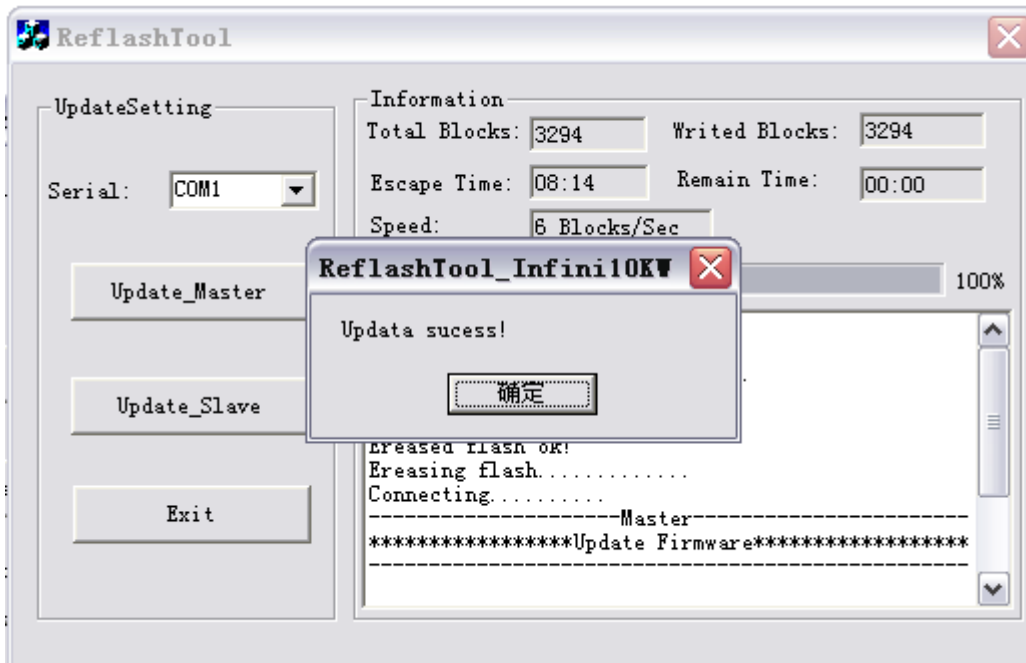


6. Press "Update_Master" button, upgrading will be started.

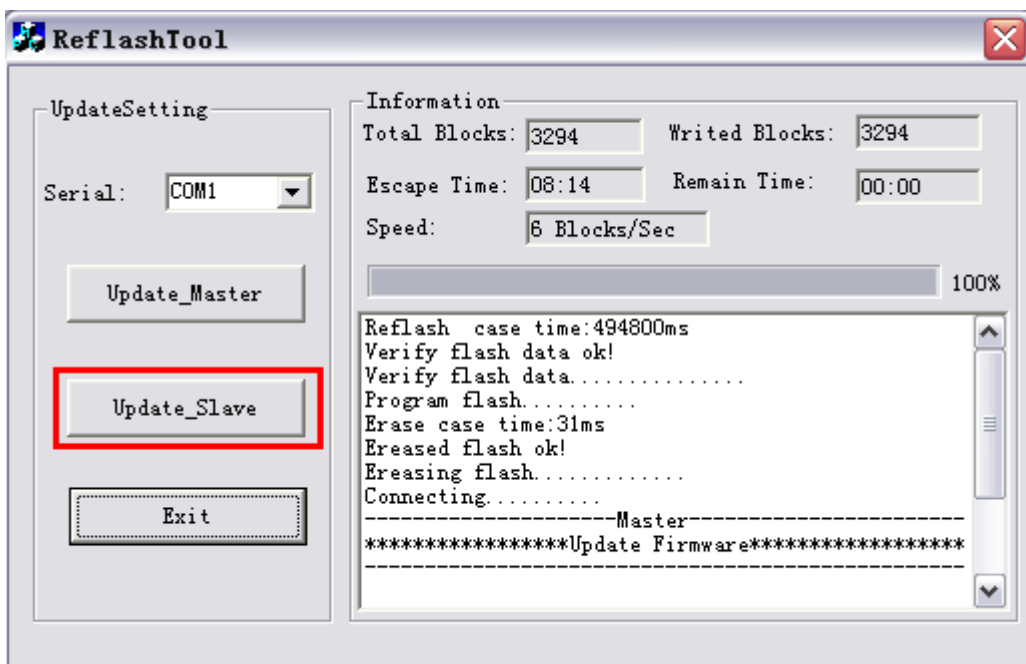




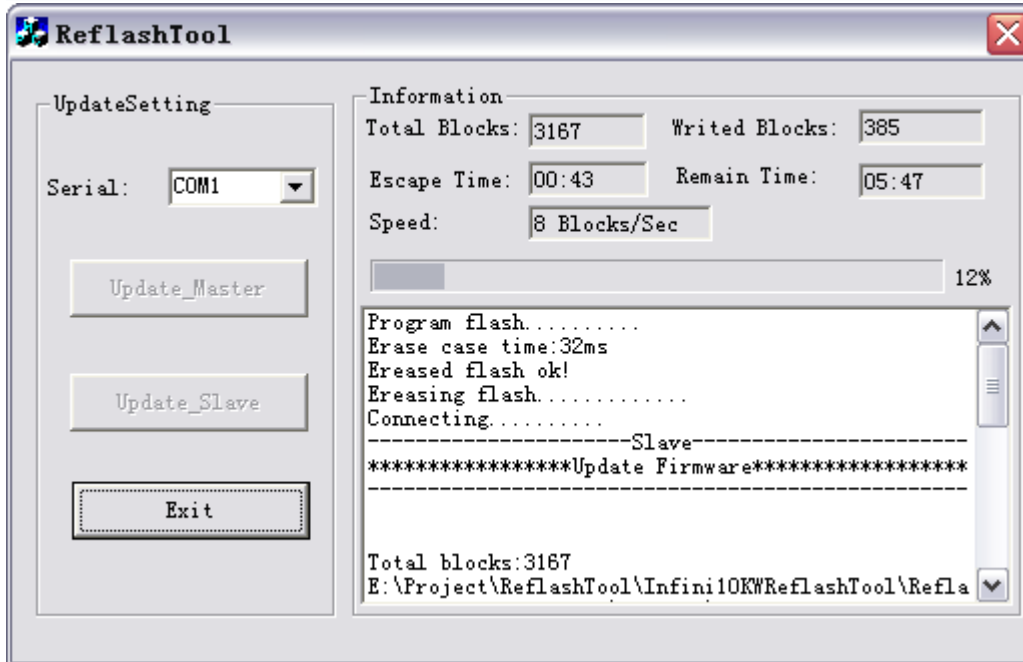
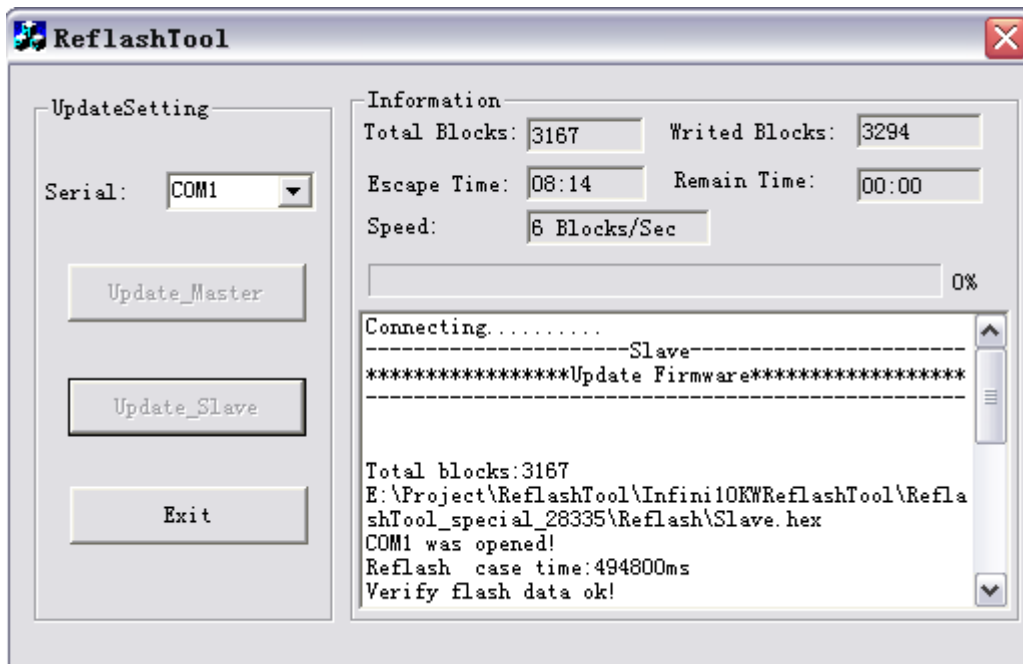
7. After few minutes, the process will be finished.



- After 1 minute, press "Update_Slave" button to upgrade another CPU.



- The process will be started.



10. After few minutes, the process will be finished. At this time, the whole process is finished completely.

