

## Remote Panel Firmware Upgrade Process

**Step1.** Connect the unit and the PC via RS-232 communication cable.

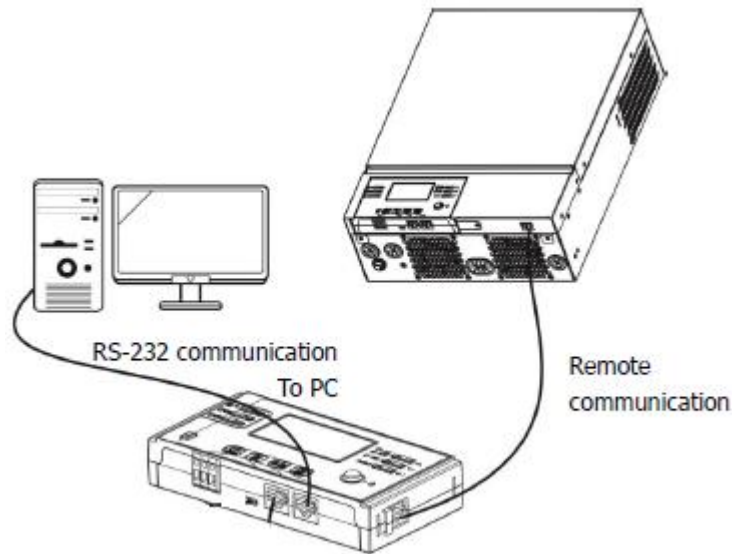


Figure 1

**Step2.** Once the unit has been properly installed and the batteries are connected well, simply press On/Off switch (located on the display panel) to turn on the unit. Make sure the LCD is lit normally.



Figure 2

**Step3.** Please check the COM Port Number as below pictures.

**NOTE:** Make sure all application communication software using this COM port is turned off, including some UPS monitoring software.

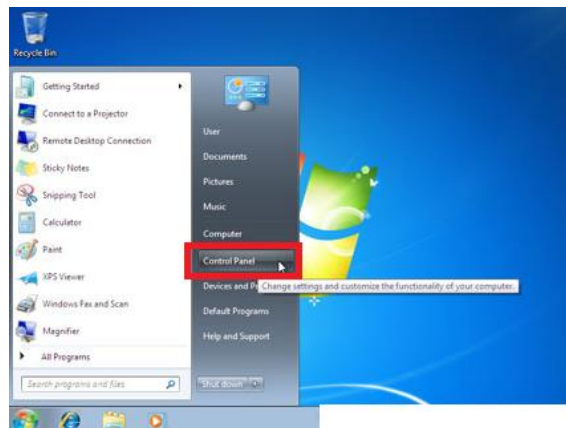


Figure 3



Figure 4

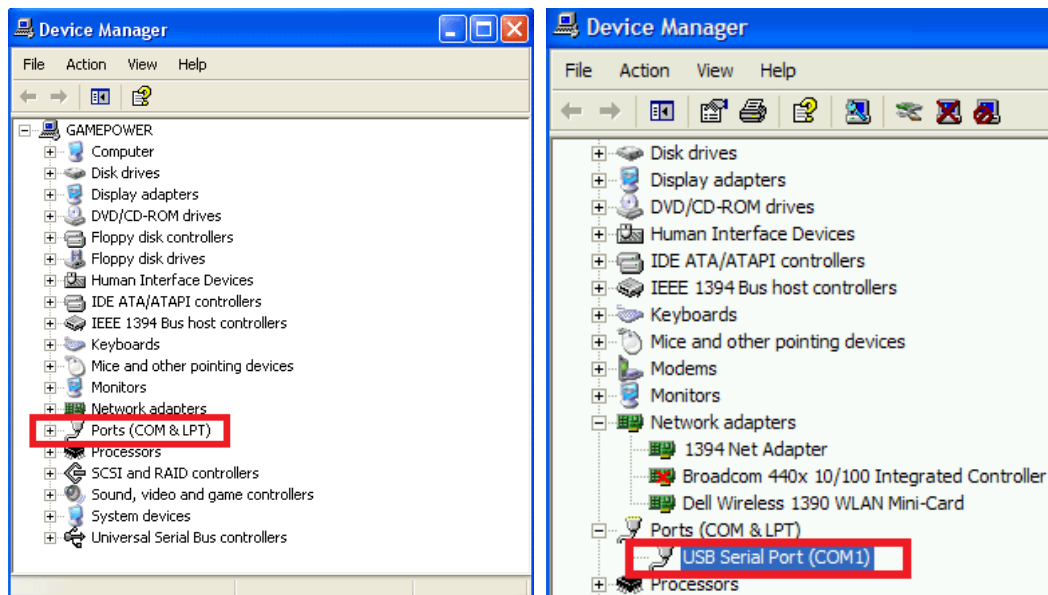


Figure 5

**Step4.** Execute "Remote\_Panel\_ReflashTool.exe". Please refer to below picture.

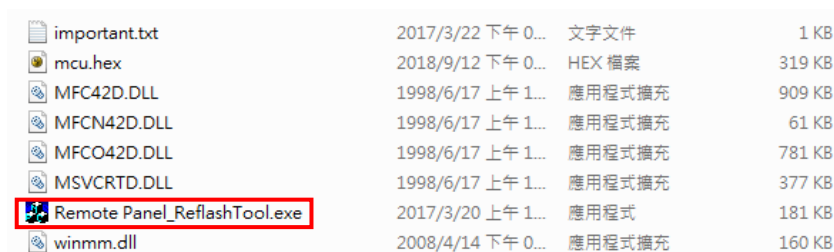


Figure 6

**Step5.** Click "Update MCU" to upgrade firmware. Please refer to below picture.

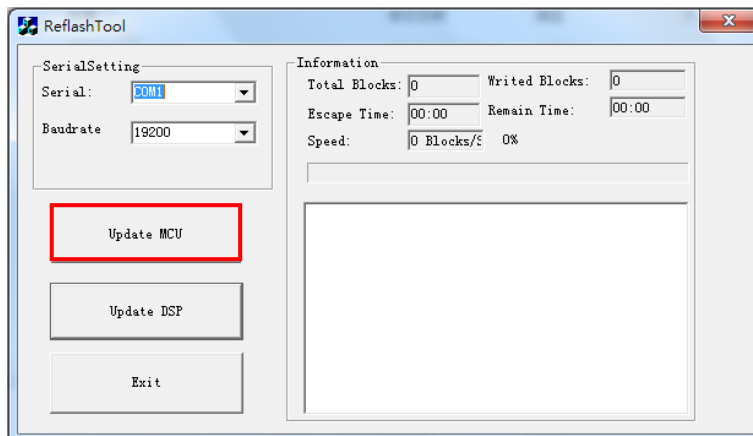


Figure 7

Please wait for about ten seconds.

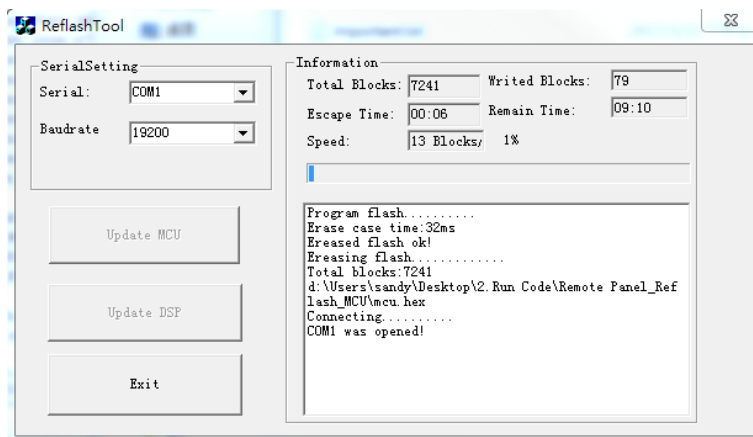


Figure 8

**Step6.** After the firmware upgrade successful, you can see the information as below. Click "Exit".

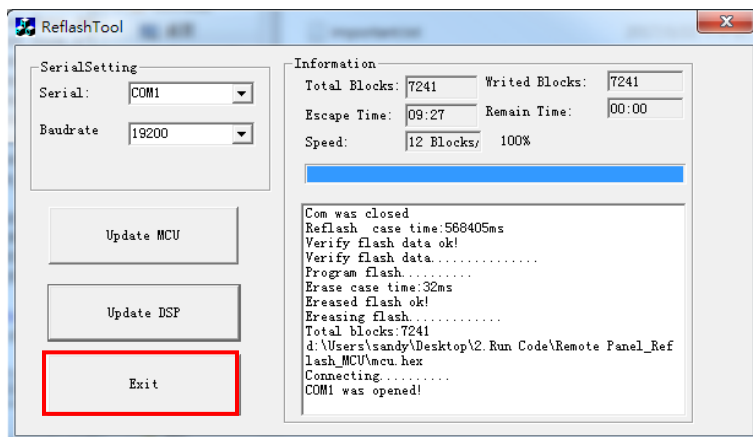


Figure 9