

The procedures for updating the software on inverter and SCC

* The file is for unit with USB interface.

Step 1: Connect the unit and the PC by a USB cable

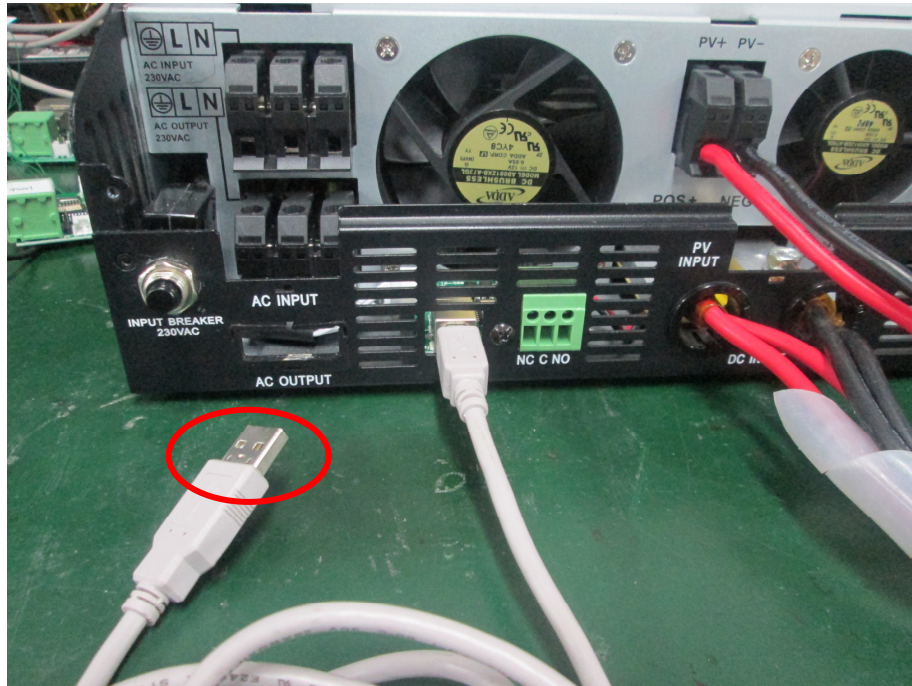


Figure 1

Step 2: Connect the DC power or battery (must be more than start up voltage, i.e. >11.5V for 1kVA model and >23.0V for 2KVA model and 3kVA model) to the battery connector

Step 3: Connect the PV power to the PV connector, switch on the unit, then wait until the PV icon on LCD displays



Figure 2

Suggestion: PV voltage is 5V larger than battery voltage

Step 4: check USB port number you are using in Computer management >> Device manage >> Human interface devices>>HID-compliant device.

Note: Make sure all application communication software using this USB port is closed. The application software include some UPS monitoring software

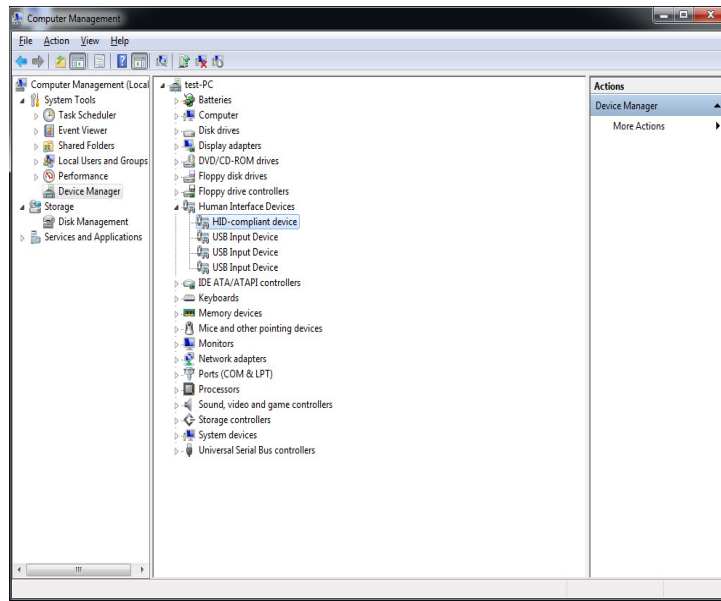


Figure 3

Step5 to Step9 is to update inverter main board firmware

Step 5: Execute 'InvReflashTool.exe'

Step 6: Click interface check box to select the right USB port(Check in step 4).

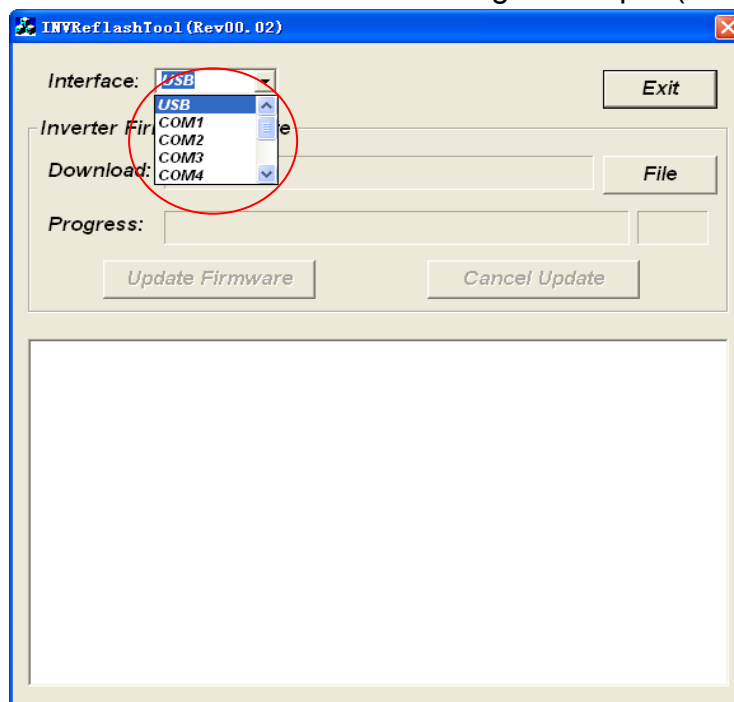


Figure 4

Step 7: Click File button.

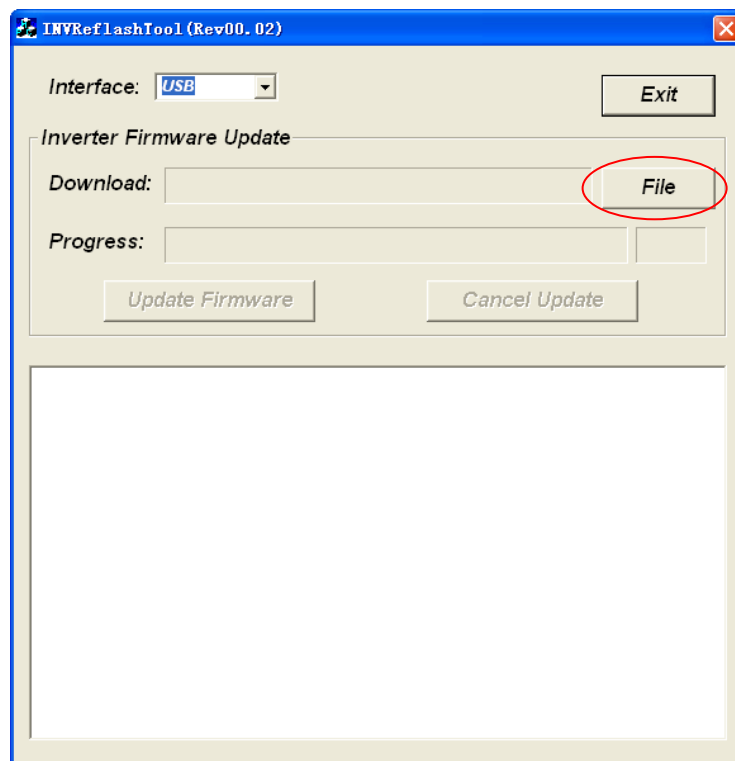


Figure 5

Select the firmware file, by double clicking it.

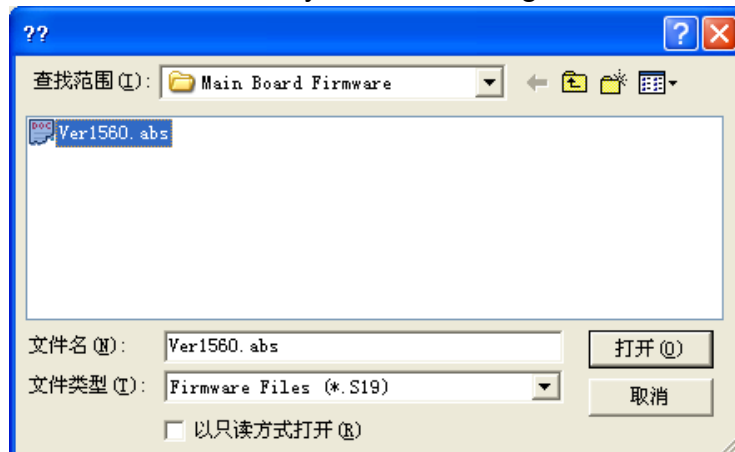


Figure 6

Step 8: Click **Update Firmware** button to update firmware.

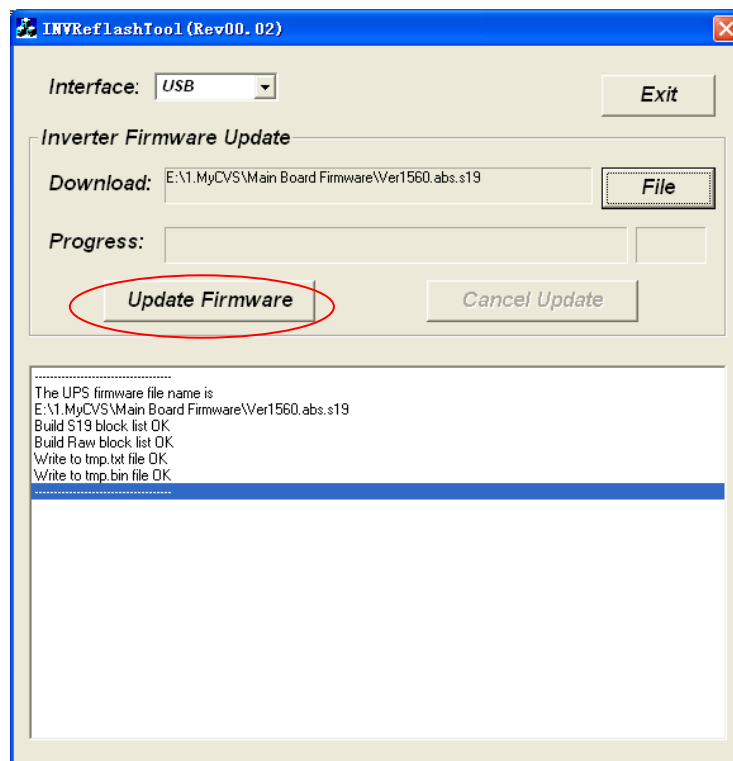


Figure 7

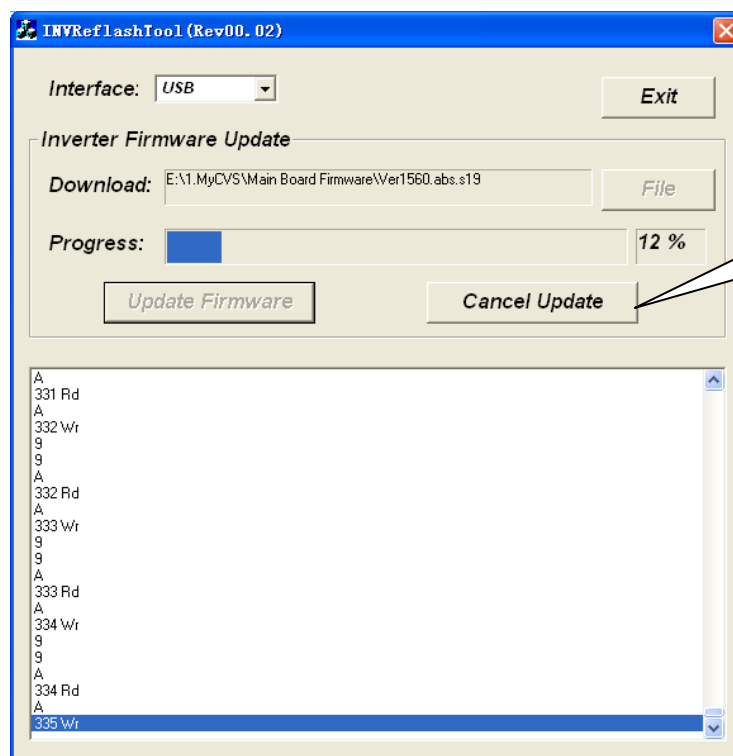


Figure 8

Step 9: When the processing bar is up to 100%, below dialog will pop-up to remind you the programming is successful! Now the software of the main board is updated completely!

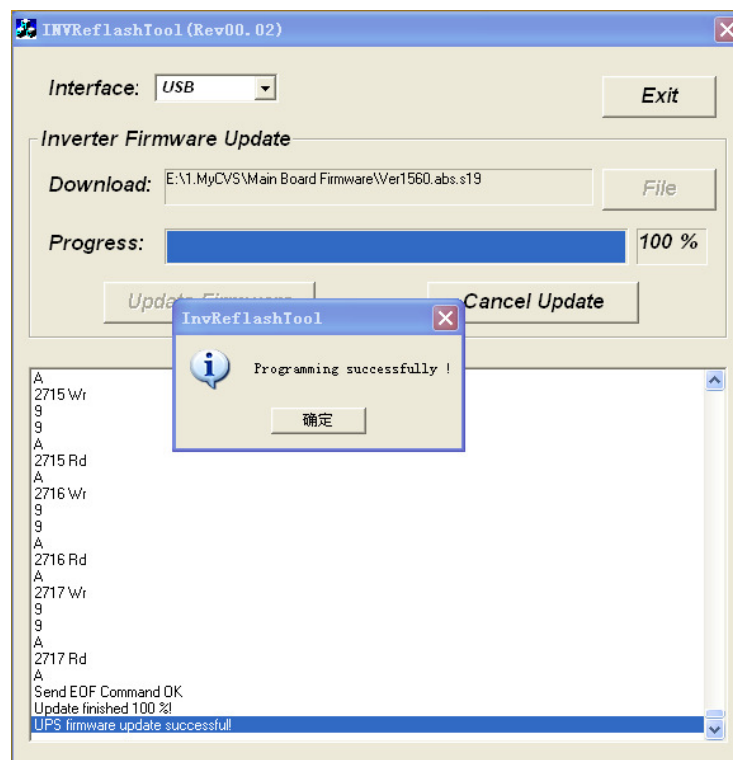


Figure 9

Step10 to Step14 is to update SCC firmware

Step 10: Then update the SCC firmware. Close InvReflashTool.exe. Execute SccReflashTool.exe.

Step 11: Click interface check box to select the right USB port.

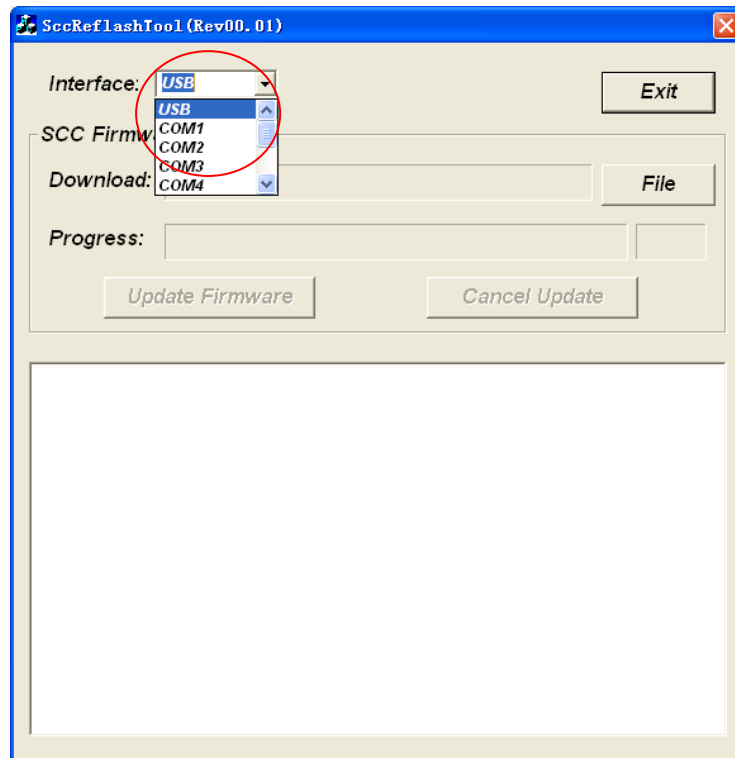


Figure 10

Step 12: Click **File** button.

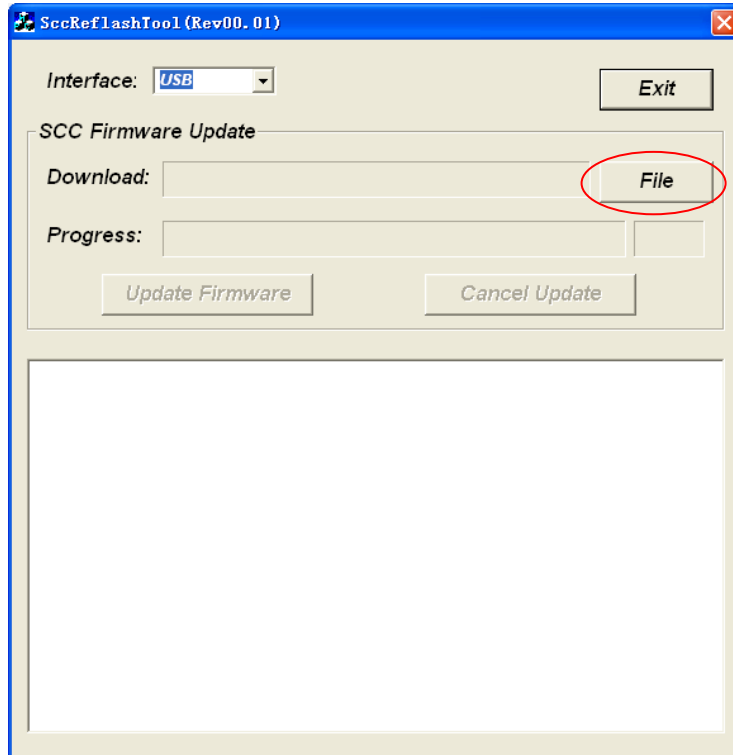


Figure 11

Select the firmware file, by double clicking it.

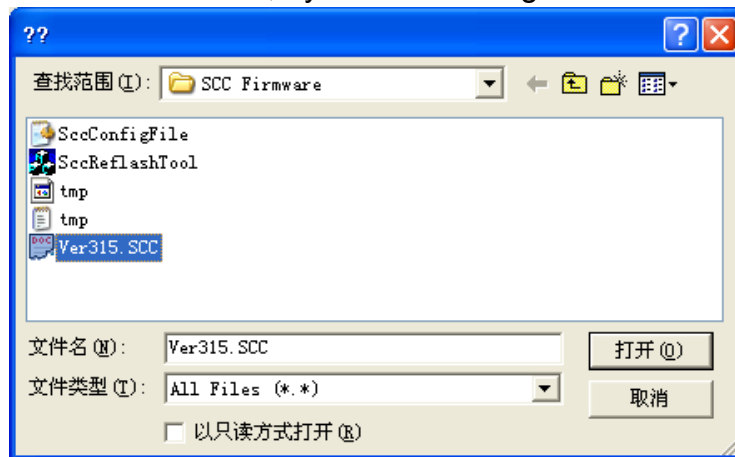


Figure 12

Step 13: Click **Update Firmware** button to update SCC firmware.

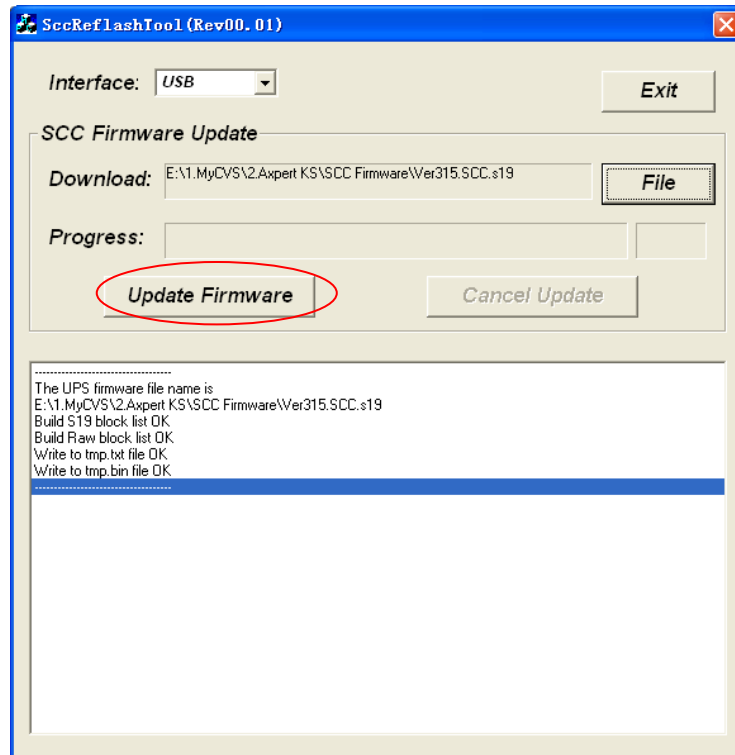


Figure 13

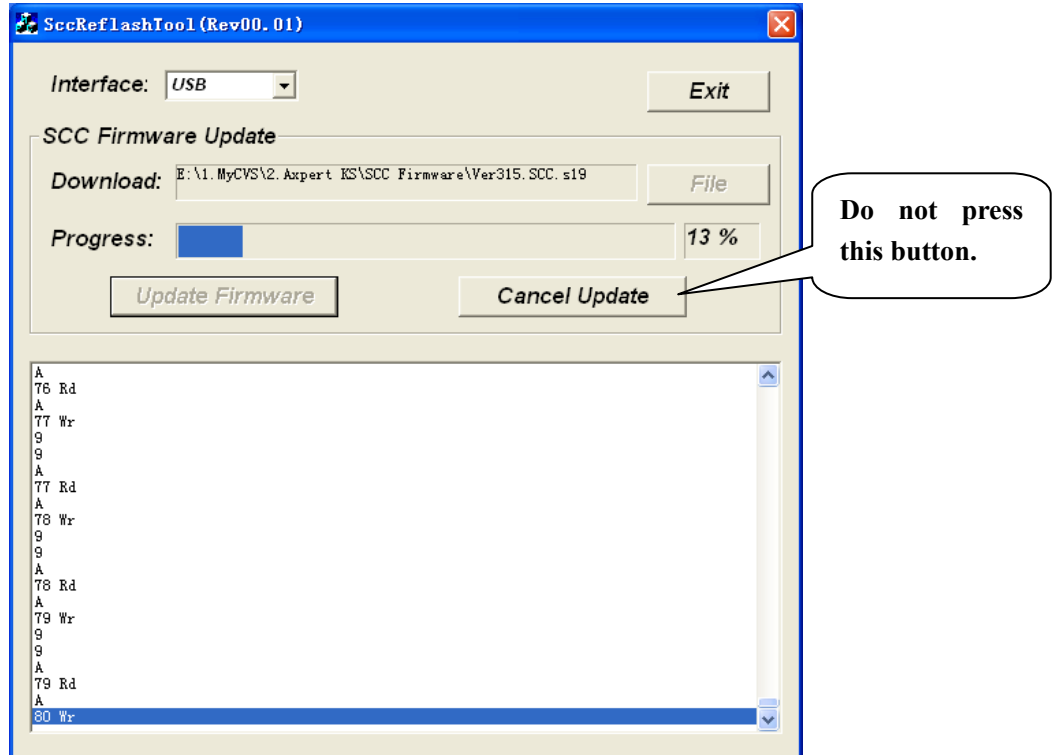


Figure 14

Step 14: When the processing bar is up to 100%, below dialog will pop-up to remind you the programming is successful! Now the software of the SCC is updated completely!

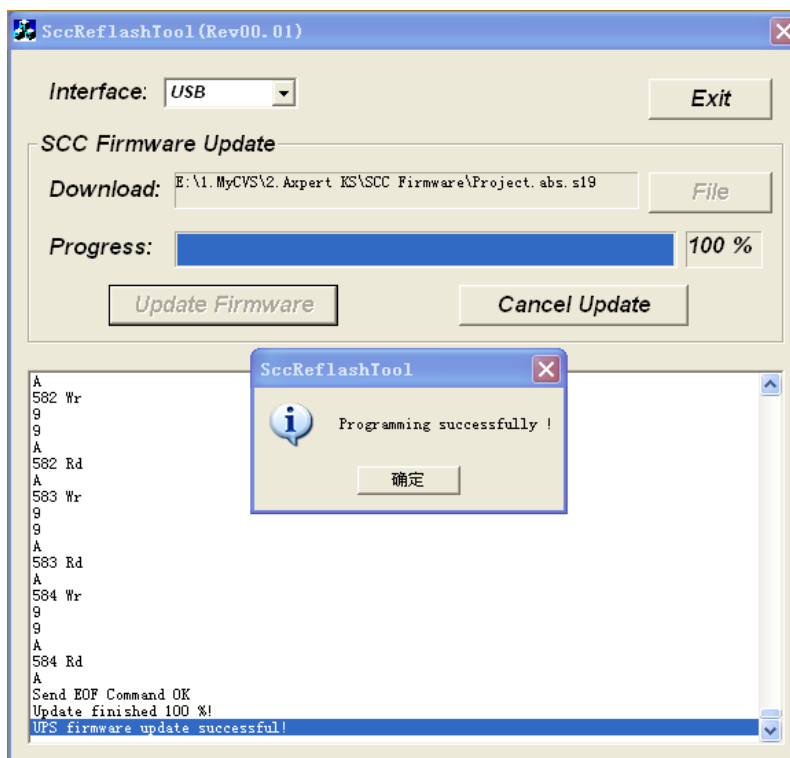


Figure 15

Now the main board and SCC firmware is updated completely!