

## The procedures for updating the software on inverter and SCC

\* This file is for the unit with RS232 interface.

**Step 1:** Connect the unit and the PC by a RS232 to RJ45 cable



Figure 1

**Step 2:** Connect the DC power or battery (must be more than start up voltage, i.e. >11.5V for 1kVA model and >23.0V for 2KVA model and 3kVA model) to the battery connector

**Step 3:** Connect the PV power to the PV connector, switch on the unit, then wait until the PV icon on LCD displays



Figure 2

Suggestion: PV voltage is 5V larger than battery voltage

**Step 4:** check COM port number you are using in Computer management >> Device manage >> Ports(COM & Port).

**Note:** Make sure all application communication software using this COM port is closed. The application software include some UPS monitoring software

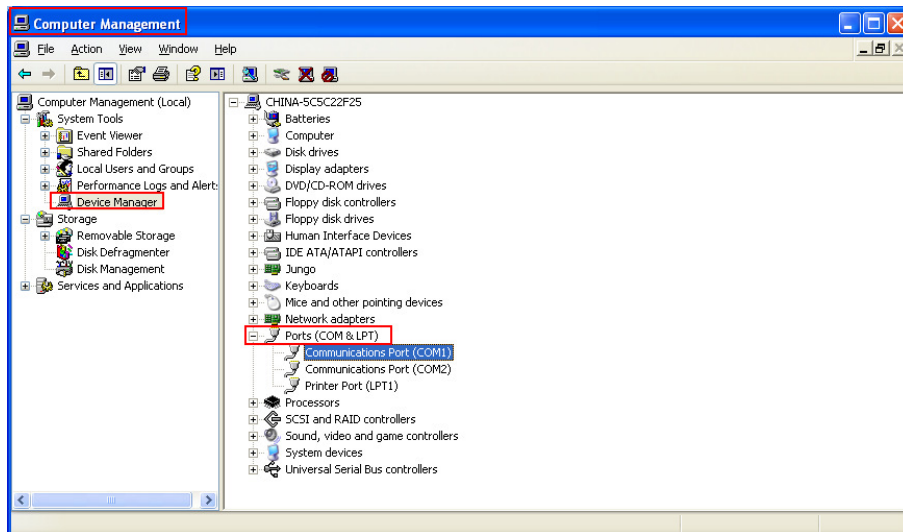


Figure 3

Step5 to Step9 is to update inverter main board firmware

**Step 5:** Execute 'InvReflashTool.exe'

**Step 6:** Click interface check box to select the right COM port(Check in step 4).

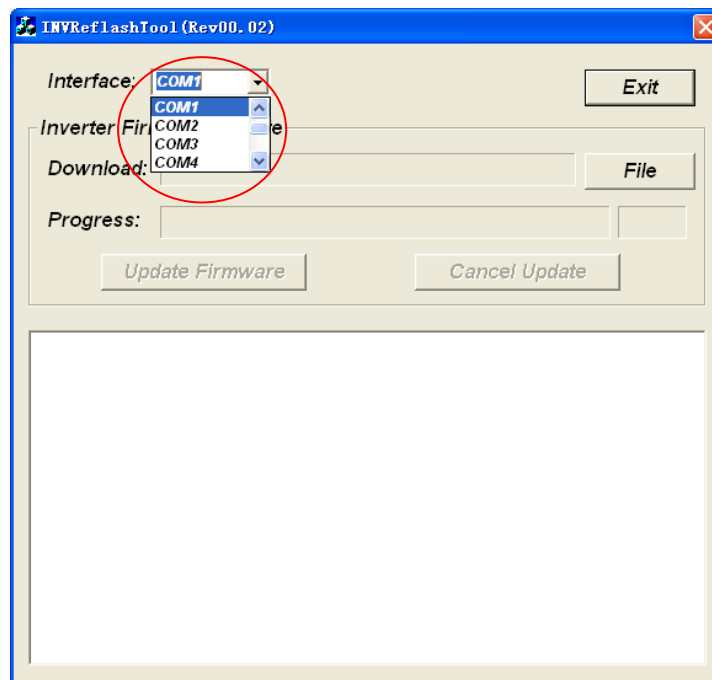


Figure 4

**Step 7:** Click **File** button.

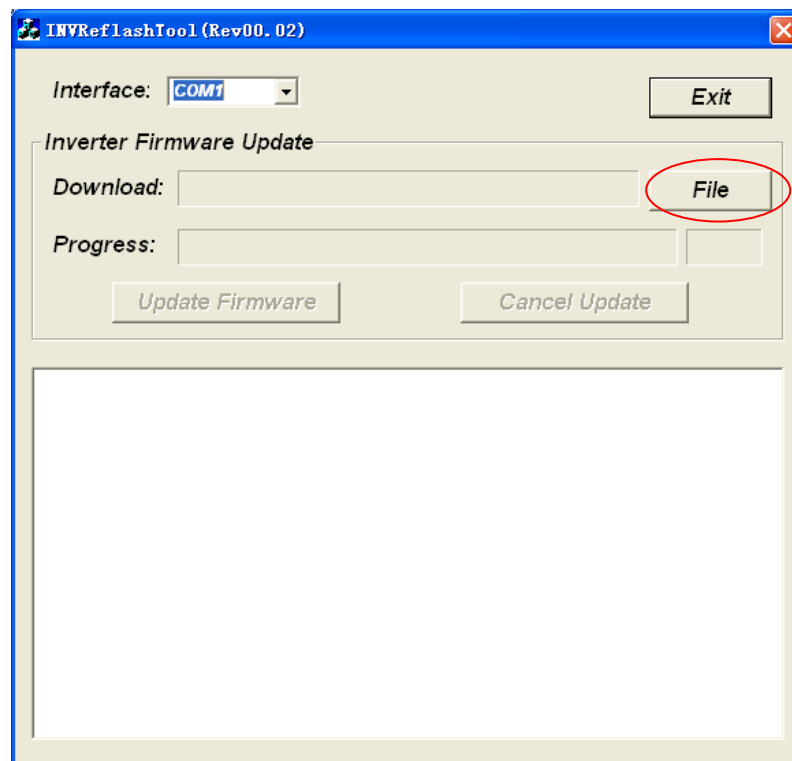


Figure 5

Select the firmware file, by double clicking it.

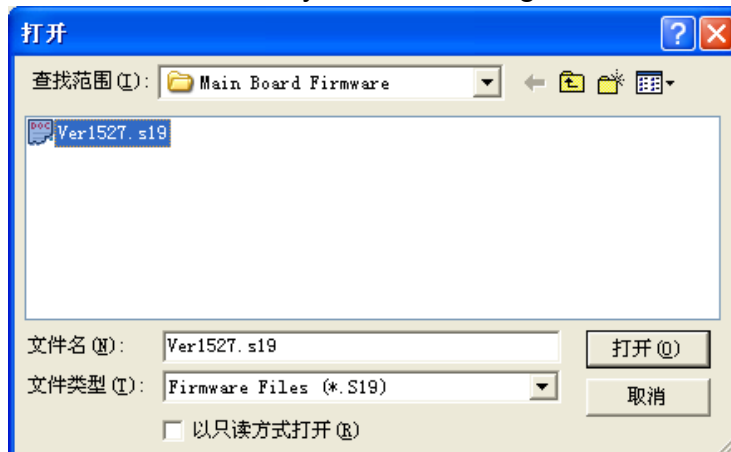


Figure 6

**Step 8:** Click **Update Firmware** button to update firmware.

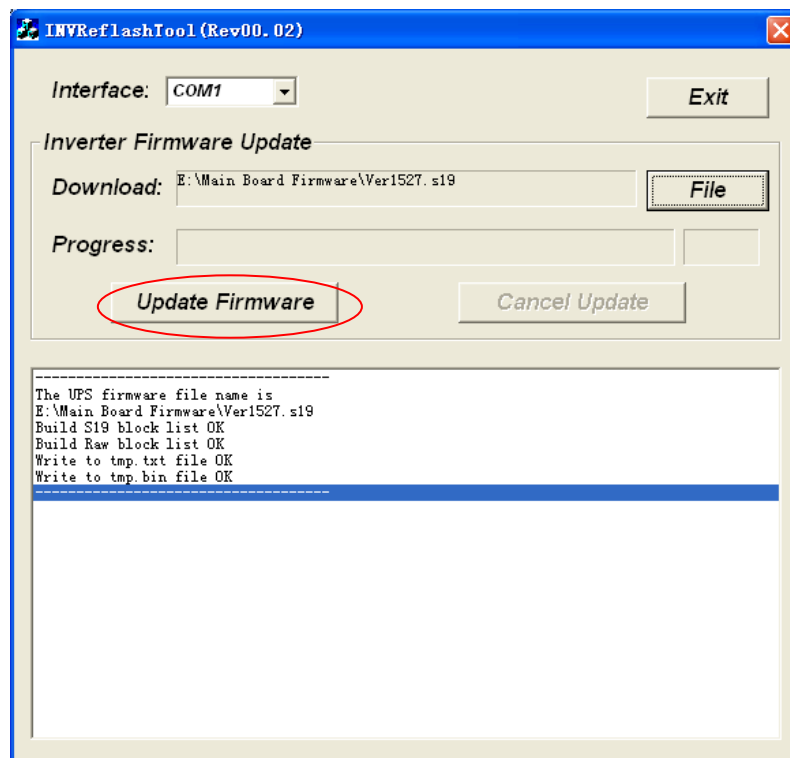


Figure 7

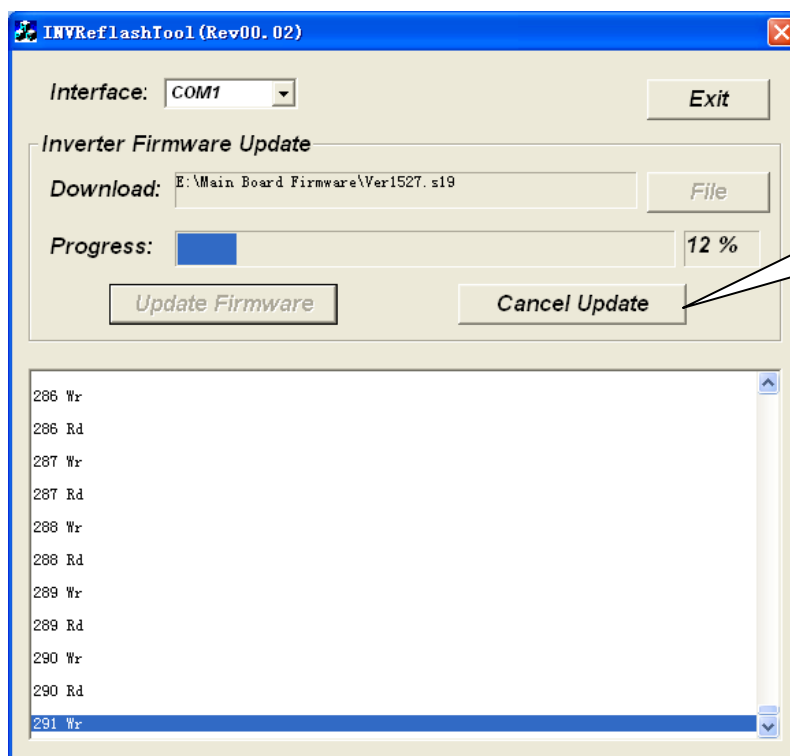


Figure 8

**Step 9:** When the processing bar is up to 100%, below dialog will pop-up to remind you the programming is successful! Now the software of the main board is updated completely!

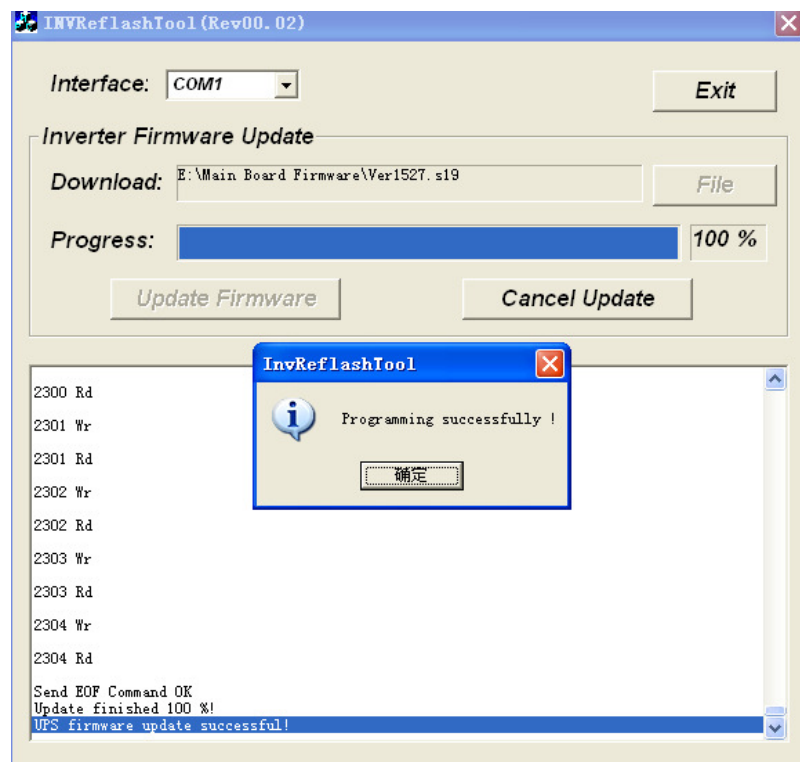


Figure 9

Step10 to Step14 is to update SCC firmware

**Step 10:** Then update the SCC firmware. Close InvReflashTool.exe. Execute SccReflashTool.exe.

**Step 11:** Click interface check box to select the right COM port.

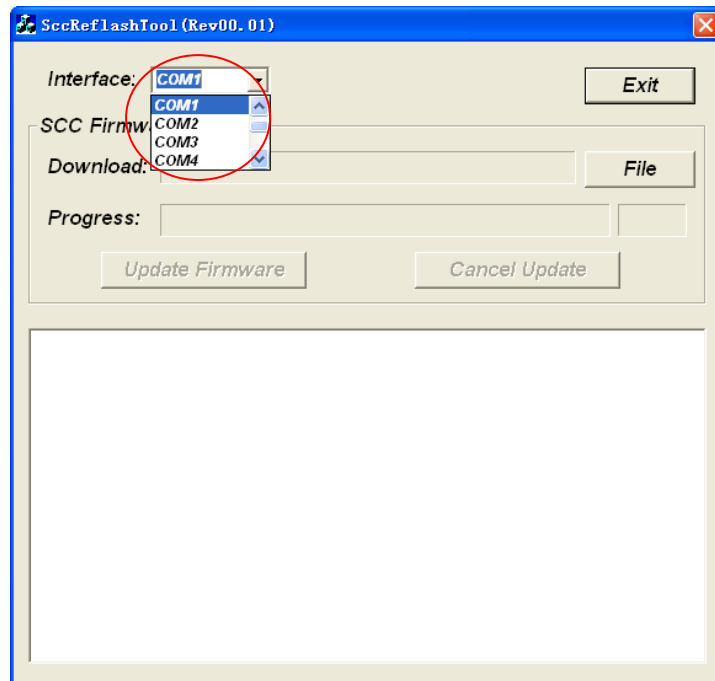


Figure 10

**Step 12:** Click **File** button.

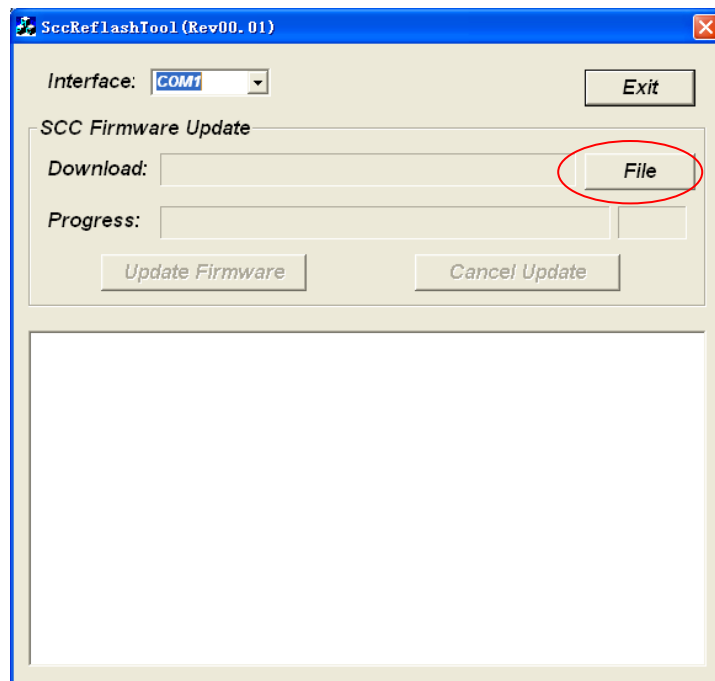


Figure 11

Select the firmware file, by double clicking it.

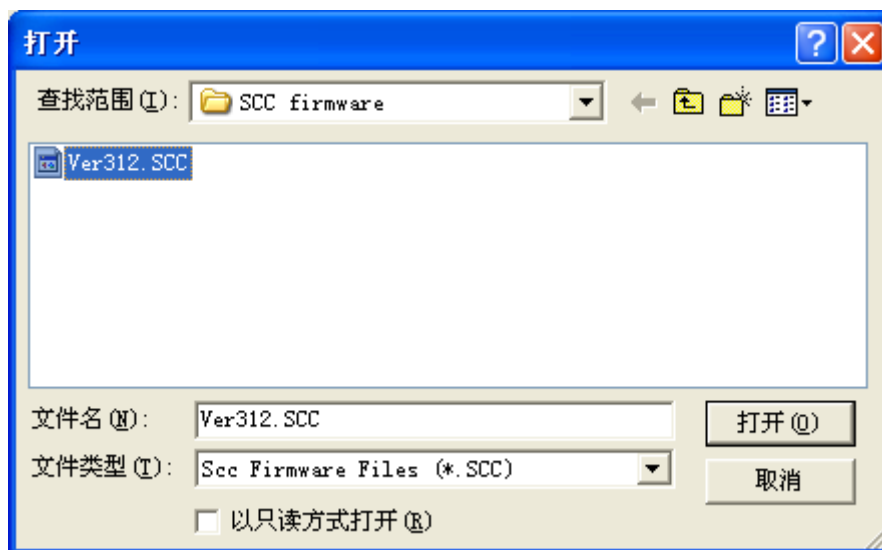


Figure 12

**Step 13:** Click **Update Firmware** button to update SCC firmware.

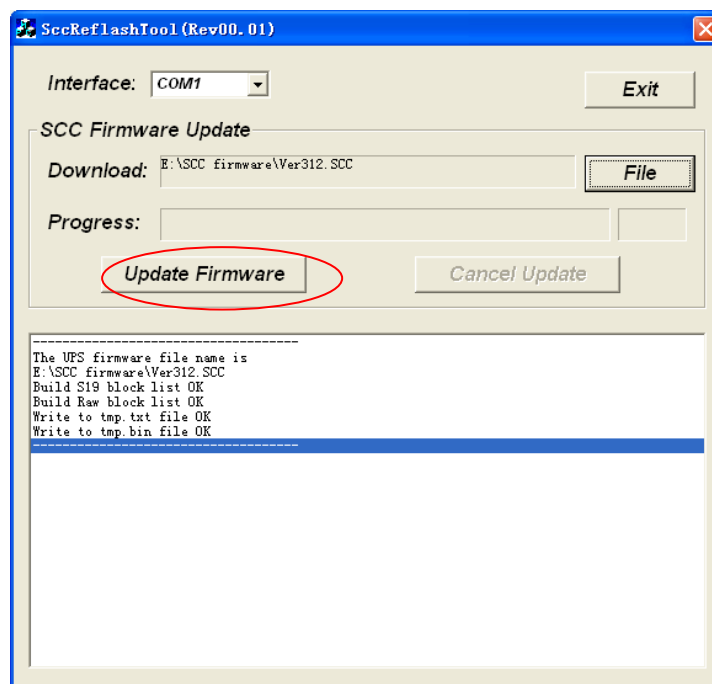


Figure 13

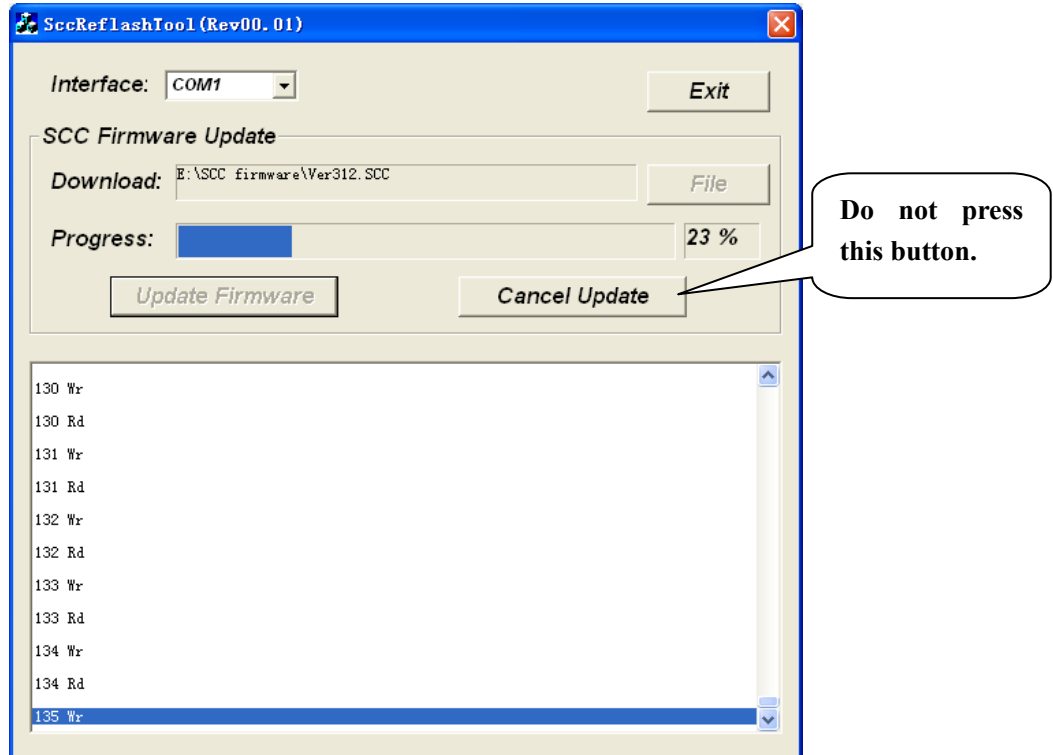


Figure 14

**Step 14:** When the processing bar is up to 100%, below dialog will pop-up to remind you the programming is successful! Now the software of the SCC is updated completely!

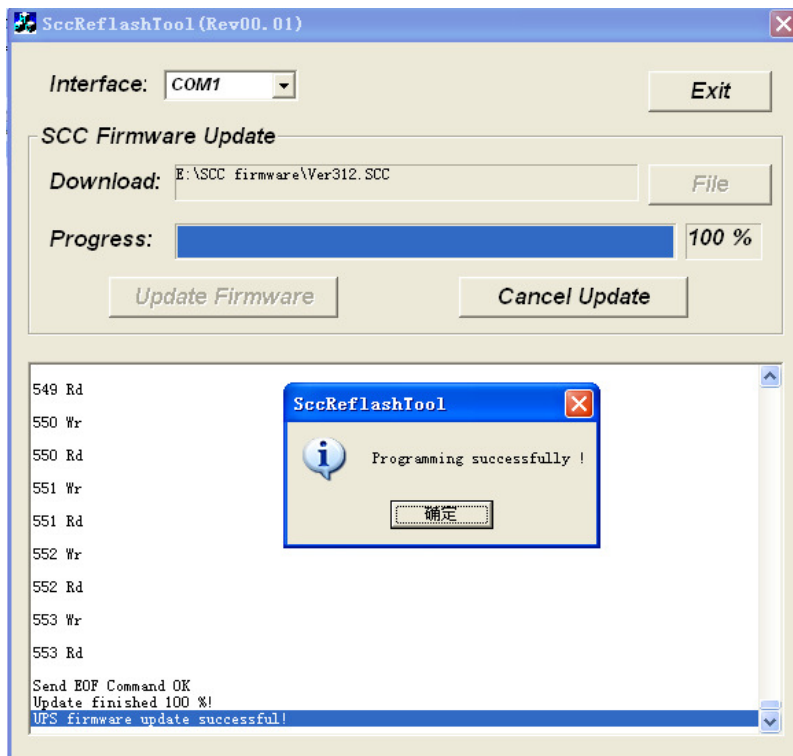


Figure 15

Now the main board and SCC firmware is updated completely!