

Firmware Upgrade Process

◆ Via RS232 cable

Step1. Connect the unit and the PC via RS232 cable, and utility power to AC terminal, switches AC breaker on. Please refer to picture as below.

NOTE: There is no NEED to turn off the unit when updating the LCD program. Keeping the unit up and running and make sure the LCD lights normally.

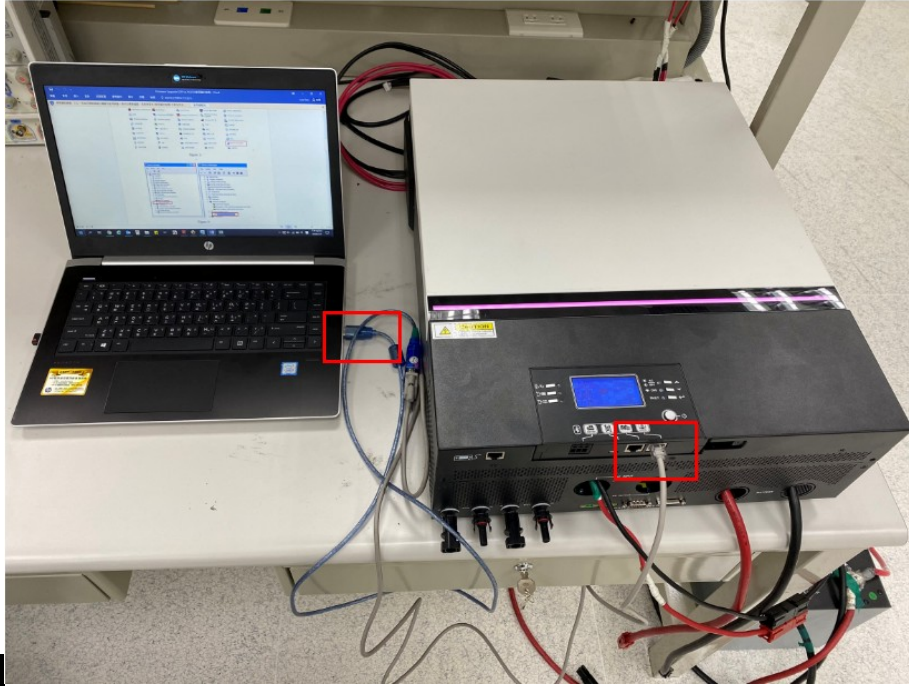


Figure 1

Step2. Please check the COM Port Number as below pictures.

NOTE: Make sure all communication applications which use this COM port are turned off. The application software includes inverter monitoring application software.

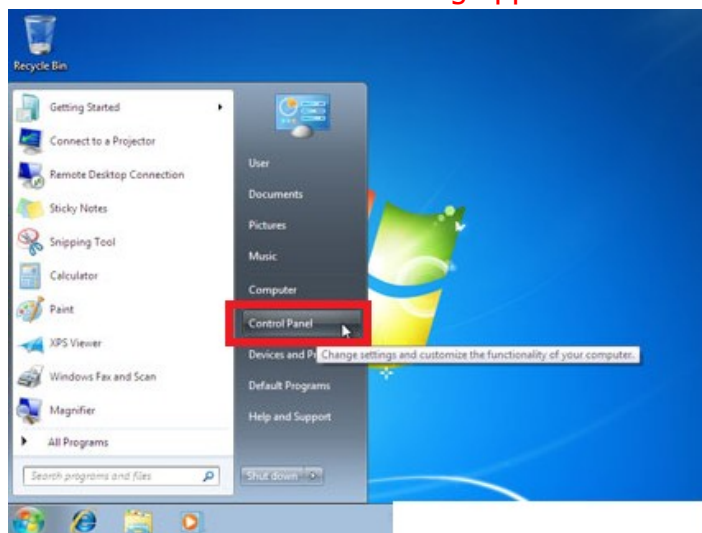


Figure 2



Figure 3

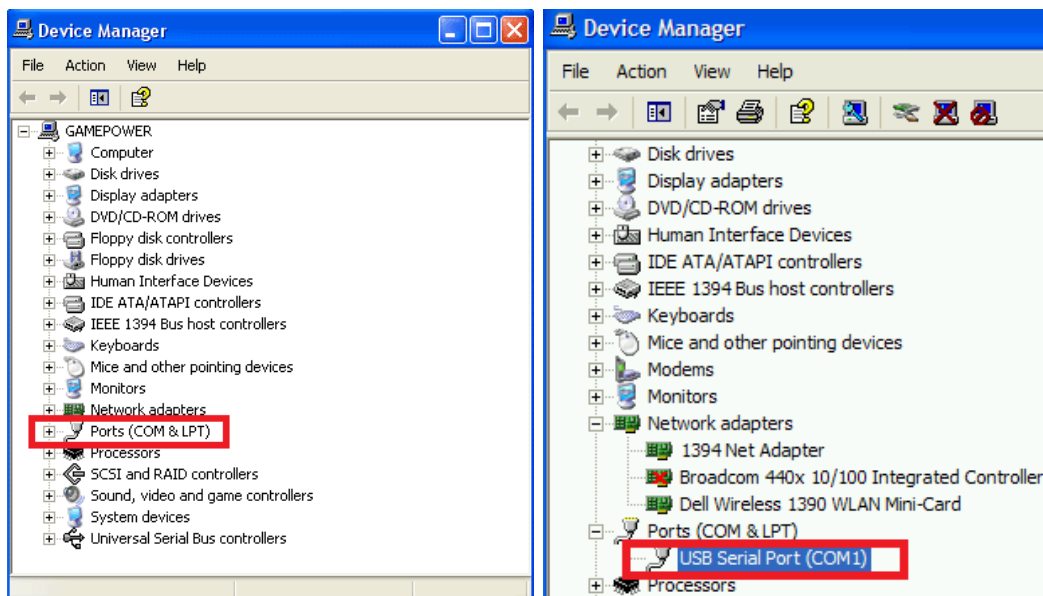


Figure 4

Step3. Double left click the "Reflash" folder, and open the "ReflashTool_Xseries.exe" to run the program. Please refer to below picture.

名稱	修改日期	類型	大小
dsp.hex	7/23/2019 2:06 P...	HEX 檔案	417 KB
hex2000.exe	6/28/2006 8:28 A...	應用程式	121 KB
hexbin2.exe	4/27/2011 11:40 ...	應用程式	14 KB
Inv.cmd	11/12/2015 7:34 ...	Windows 命令指...	1 KB
MFC42D.DLL	6/17/1998 12:00 ...	應用程式擴充	909 KB
MFC042D.DLL	6/17/1998 12:00 ...	應用程式擴充	781 KB
MSVCRTD.DLL	6/17/1998 12:00 ...	應用程式擴充	377 KB
ReflashTool_Xseries.exe	9/13/2012 6:36 P...	應用程式	149 KB
winmm.dll	4/14/2008 8:00 P...	應用程式擴充	160 KB
编译.bat	6/8/2011 11:24 A...	Windows 批次檔案	1 KB

Figure 5

Step4. Click "Update" to upgrade firmware. Please refer to below picture.

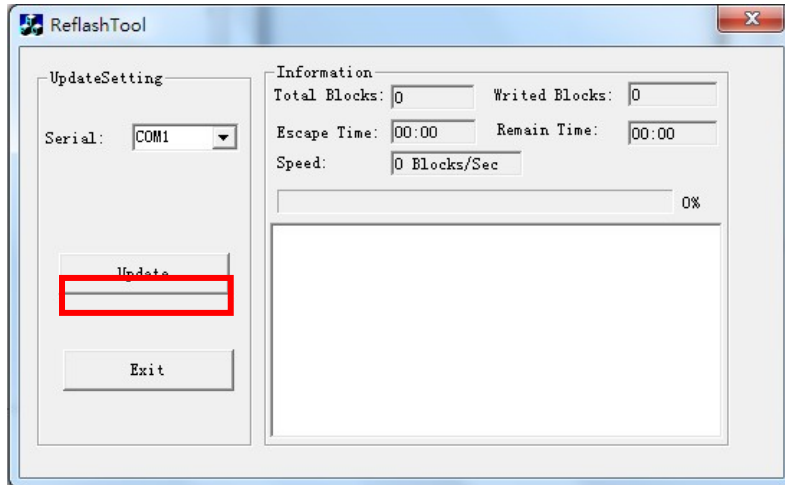


Figure 6

Please wait for about ten seconds. The update will be in progress, LCD will display "UPG YES" and Setting LED 1 will flash once 500ms.

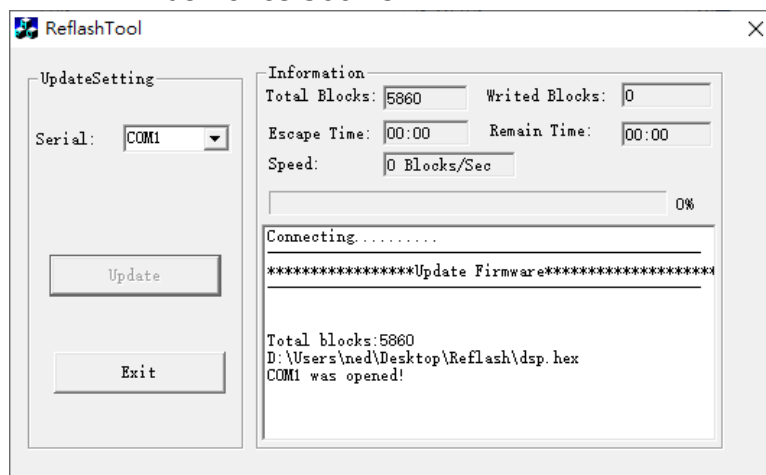


Figure 7

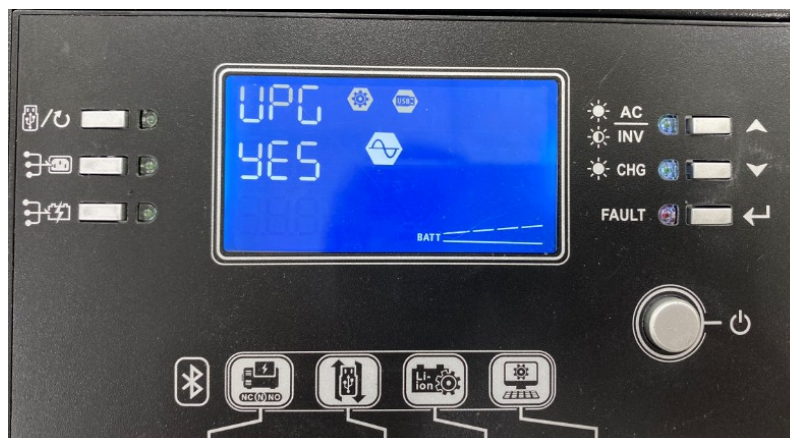


Figure 8

Step5. Once upgraded successfully, you can see the pup-up window as below. Please click “確定” to close the pup-up window. Please refer to below picture.

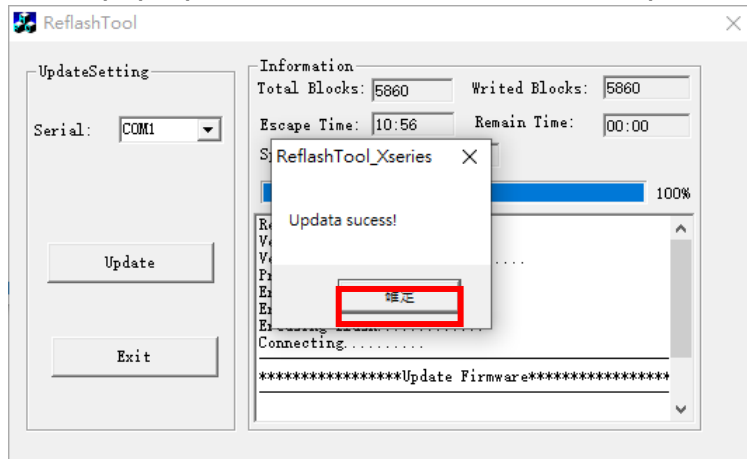


Figure 9

Click “Exit” to exit tool

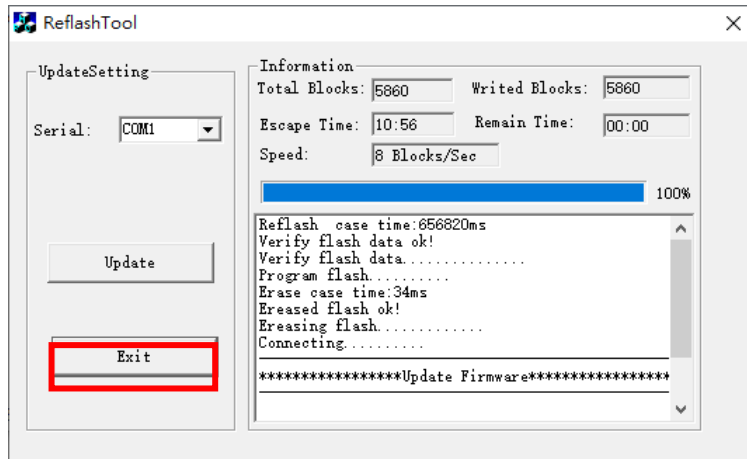


Figure 10

Step7. Please wait for about ten seconds. The LCD will return to main screen.



Figure 11

Step8. Please confirm the U1 firmware version is changed to 90.11 via LCD.